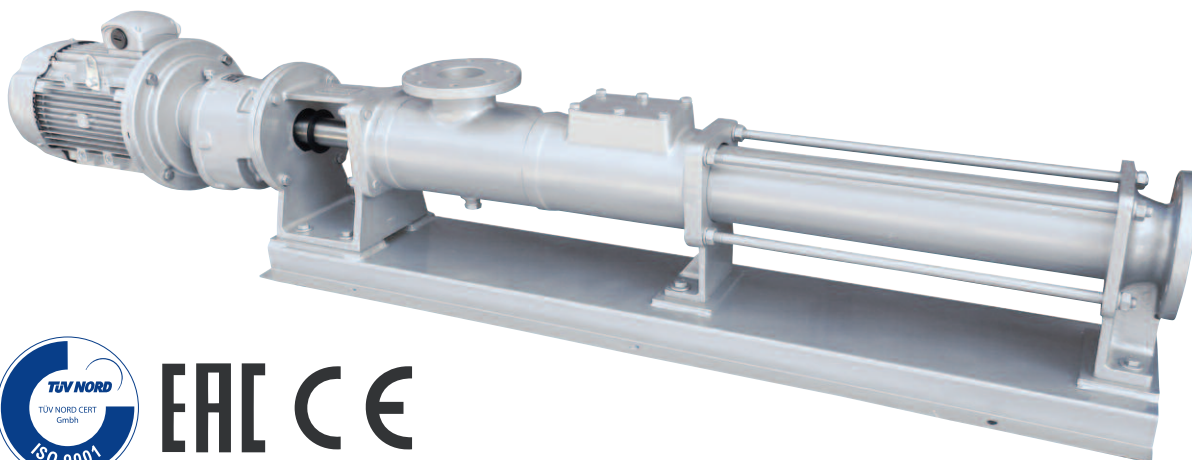


The **ATLAS CBM series** is the best solution for the industrial sector in pumping a vast range of fluids. They are synonymous with strength, reliability, performance and application flexibility.

Suitable for pumping viscous and non-viscous products, with or without solids of any nature, they are an ideal solution for those seeking a standard product with advanced technology with unbeatable cost benefits in the current single screw pumps market.



EAC CE

## Features

- ✓ Length Geometry
- ✓ Lower Sliding Velocity
- ✓ Higher Performance compared to classic geometry
- ✓ Minor service requirements
- ✓ Stability in pressure & flow due to longer sealing lines
- ✓ Improved flow characteristics
- ✓ Reduced Vibration, Turbulence, shear rates & pulsation
- ✓ Smooth and performance
- ✓ Improved volumetric, Mechanical & overall efficiency
- ✓ Block construction minimizes overall dimensions, providing a shorter pump length.  
Eliminates the need for coupling and cover protection.

## Technical data

Maximum Capacity	75 m <sup>3</sup> /h
Maximum Pressure	12 Bar
Maximum Temperature	100 °C
Maximum Viscosity	500.000 cPs

### Construction Materials

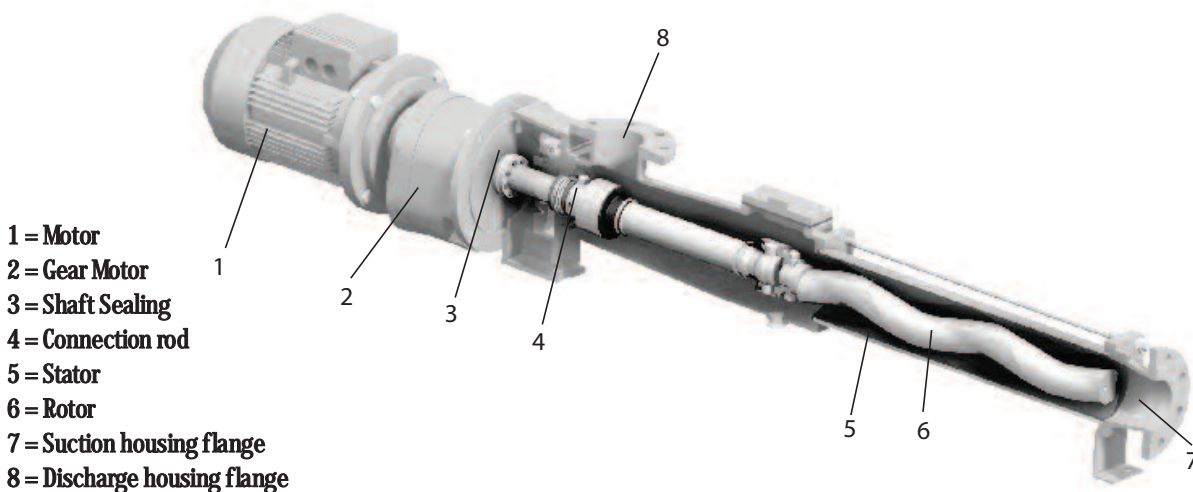
- ▶ Pump Body: Cast iron GG25
- ▶ Available Rotors: Tool Steel AISI D6 HCP, Stainless steel 316
- ▶ Available Stators: NBR, EPDM, VITO, HYPALON
- ▶ Seal: Mechanical seal SIC/SIC/
- ▶ Ports: Flange PN16

They are used for the transfer of:

- ▶ Raw, primary, secondary sludges
- ▶ Thickened sludges
- ▶ Sludges before the filter press

Other industrial applications are:

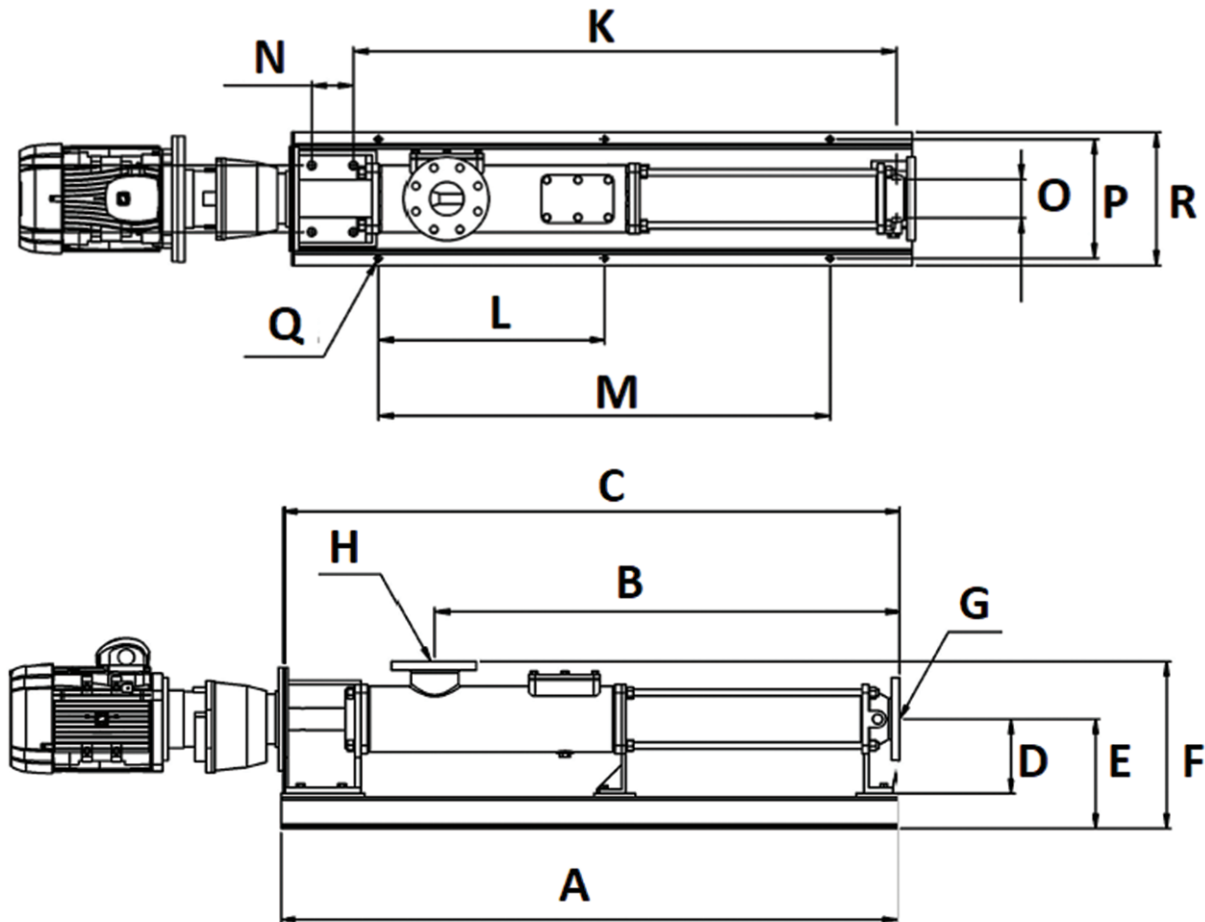
- ▶ Paper industry like starch, glue
- ▶ Building industry like colourings, cement, mortar, bentonite
- ▶ Ship building industry like waste oil, oily bilge water
- ▶ Ceramic industry as clayey sludges, lime, glaze
- ▶ Mining industry
- ▶ Petrochemistry
- ▶ Agriculture
- ▶ Refinery



### Pump Models

Type	Max capacity	Max Pressure	Ports
ATLAS CBM 15	2 m3/h	4.5 Bar	FLANGE DN 25
ATLAS CBM 21	5 m3/h	6 Bar	FLANGE DN 32
ATLAS CBM 31	13 m3/h	6 Bar	FLANGE DN 50
ATLAS CBM 38	25 m3/h	6 Bar	FLANGE DN 65
ATLAS CBM 45	30 m3/h	6 Bar	FLANGE DN 65
ATLAS CBM 53	40 m3/h	6 Bar	FLANGE DN 80
ATLAS CBM 63	50 m3/h	6 Bar	FLANGE DN 100
ATLAS CBM 76	75 m3/h	6 Bar	FLANGE DN 125
ATLAS CBM 22	1 m3/h	12 Bar	FLANGE DN 40
ATLAS CBM 32	3 m3/h	12 Bar	FLANGE DN 50
ATLAS CBM 42	6 m3/h	12 Bar	FLANGE DN 65
ATLAS CBM 52	11 m3/h	12 Bar	FLANGE DN 80
ATLAS CBM 62	20 m3/h	12 Bar	FLANGE DN 100

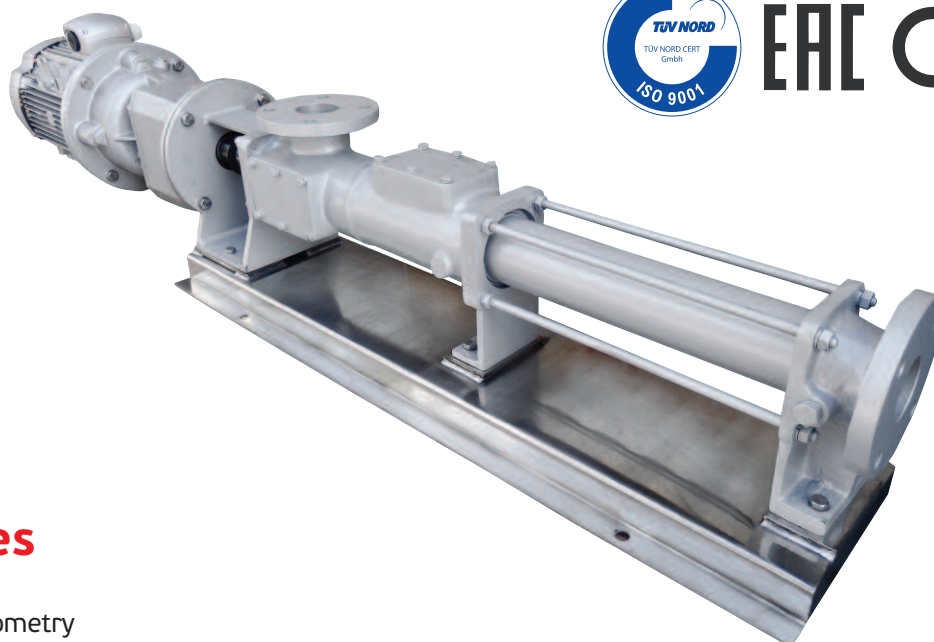
### Pump Dimensions



Pump Type	BASIC DIMENSIONS mm															
	A	B	C	D	E	F	G	H	K	L	M	N	O	P	Q	R
ATLAS CBM15	631	410	642	120	178	250	DN25	DN25	546	---	490	---	50	220	Φ15	250
ATLAS CBM 21	690	466	698	120	178	253	DN32	DN32	597	---	490	---	50	220	Φ15	250
ATLAS CBM 31	900	660	919	155	215	316	DN50	DN50	790	---	600	---	70	245	Φ15	280
ATLAS CBM 38	1158	881	1161	160	220	342	DN65	DN65	1045	---	758	---	78	280	Φ15	310
ATLAS CBM 45	1202	942	1222	160	220	342	DN65	DN65	1105	---	758	---	78	280	Φ15	310
ATLAS CBM 53	1490	1127	1492	180	265	405	DN80	DN80	1300	540	1080	100	92	285	Φ15	320
ATLAS CBM 63	1712	1355	1735	200	287	432	DN100	DN100	1538	656	1312	100	110	310	Φ19	350
ATLAS CBM 76	2070	1617	2101	225	311	508	DN125	DN125	1886	835	1670	100	130	320	Φ19	350
ATLAS CBM 22	690	466	698	120	178	253	DN40	DN40	597	---	490	---	50	220	Φ15	250
ATLAS CBM 32	900	660	919	155	215	316	DN50	DN50	790	---	600	---	70	245	Φ15	280
ATLAS CBM 42	1202	942	1222	160	220	342	DN65	DN65	1105	---	758	---	78	280	Φ15	310
ATLAS CBM 52	1490	1127	1492	180	265	405	DN80	DN80	1300	540	1080	100	92	285	Φ15	320
ATLAS CBM 62	1712	1355	1735	200	287	432	DN100	DN100	1538	656	1312	100	110	310	Φ19	350

The **ATLAS SBM series** is the best solution for the industrial sector in pumping a vast range of fluids. They are synonymous with strength, reliability, performance and application flexibility.

Suitable for pumping viscous and non-viscous products, with or without solids of any nature, they are an ideal solution for those seeking a standard product with advanced technology with unbeatable cost benefits in the current single screw pumps market.



## Features

- ✓ Length Geometry
- ✓ Lower Sliding Velocity
- ✓ Higher Performance compared to classic geometry
- ✓ Minor service requirements
- ✓ Stability in pressure & flow due to longer sealing lines
- ✓ Improved flow characteristics
- ✓ Reduced Vibration, Turbulence, shear rates & pulsation
- ✓ Smooth and performance
- ✓ Improved volumetric, Mechanical & overall efficiency
- ✓ Block construction minimizes overall dimensions, providing a shorter pump length.  
Eliminates the need for coupling and cover protection.

## Technical data

Maximum Capacity	75 m <sup>3</sup> /h
Maximum Pressure	12 Bar
Maximum Temperature	100 °C
Maximum Viscosity	500.000 cPs

### Construction Materials

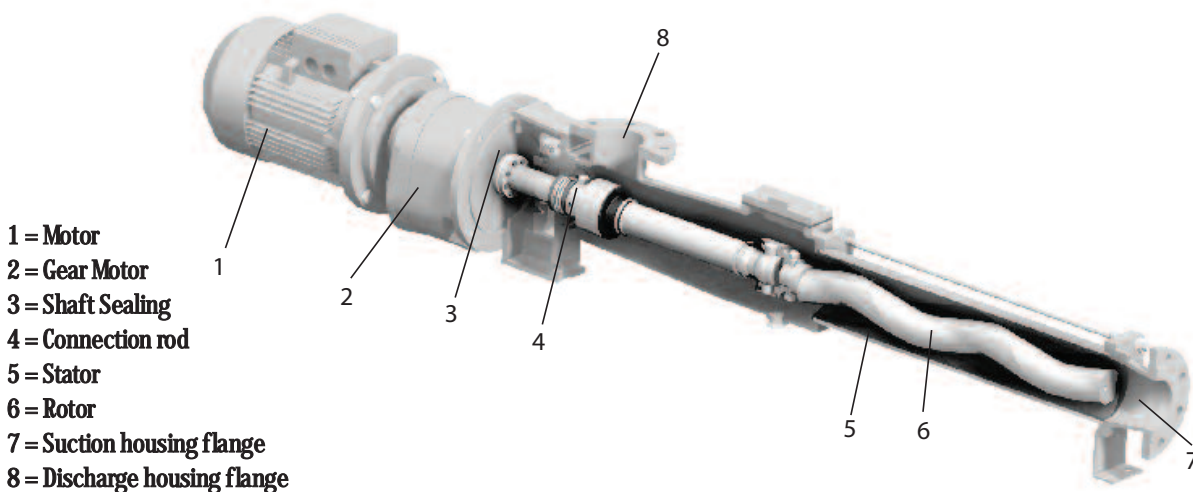
- ▶ Pump Body: Stainless steel 316
- ▶ Available Rotors: Stainless steel 316
- ▶ Available Stators: NBR, EPDM, VITON, HYPALON
- ▶ Seal: Mechanical seal SIC/SIC/
- ▶ Ports: Flange PN16

They are used for the transfer of:

- ▶ Raw, primary, secondary sludges
- ▶ Thickened sludges
- ▶ Sludges before the filter press

Other industrial applications are:

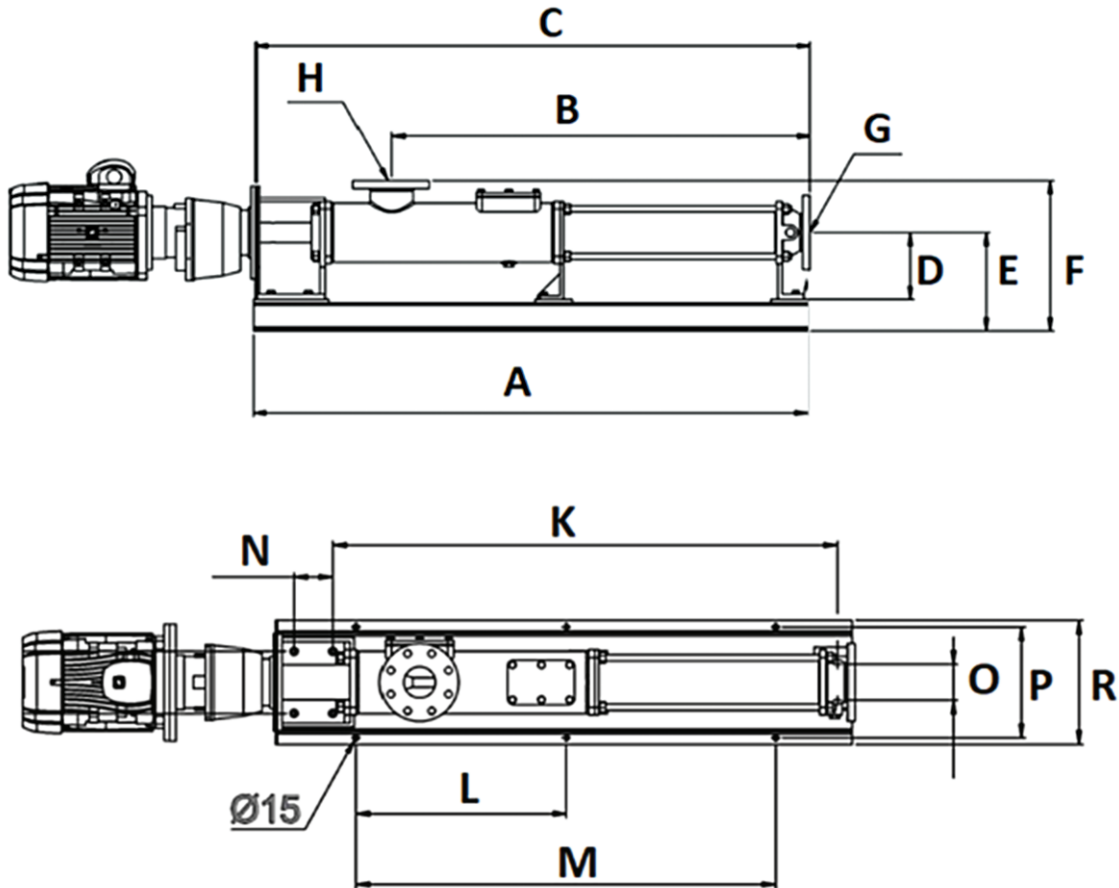
- ▶ Paper industry like starch, glue
- ▶ Building industry like colourings, cement, mortar, bentonite
- ▶ Ship building industry like waste oil, oily bilge water
- ▶ Ceramic industry as clayey sludges, lime, glaze
- ▶ Mining industry
- ▶ Petrochemistry
- ▶ Agriculture
- ▶ Refinery



### Pump Models

Type	Max capacity	Max Pressure	Ports
ATLAS SBM 15	2 m3/h	4.5 Bar	FLANGE DN 25
ATLAS SBM 21	5 m3/h	6 Bar	FLANGE DN 32
ATLAS SBM 31	13 m3/h	6 Bar	FLANGE DN 50
ATLAS SBM 38	25 m3/h	6 Bar	FLANGE DN 65
ATLAS SBM 45	30 m3/h	6 Bar	FLANGE DN 65
ATLAS SBM 53	40 m3/h	6 Bar	FLANGE DN 80
ATLAS SBM 63	50 m3/h	6 Bar	FLANGE DN 100
ATLAS SBM 76	75 m3/h	6 Bar	FLANGE DN 125
ATLAS SBM 22	1 m3/h	12 Bar	FLANGE DN 40
ATLAS SBM 32	3 m3/h	12 Bar	FLANGE DN 50
ATLAS SBM 42	6 m3/h	12 Bar	FLANGE DN 65
ATLAS SBM 52	11 m3/h	12 Bar	FLANGE DN 80
ATLAS SBM 62	20 m3/h	12 Bar	FLANGE DN 100

### Pump Dimensions



Pump Type	BASIC DIMENSIONS mm															
	A	B	C	D	E	F	G	H	K	L	M	N	O	P	Q	R
ATLAS SBM15	631	410	642	120	178	250	DN25	DN25	546	---	490	---	50	220	Ø15	250
ATLAS SBM 21	690	466	698	120	178	253	DN32	DN32	597	---	490	---	50	220	Ø15	250
ATLAS SBM 31	900	660	919	155	215	316	DN50	DN50	790	---	600	---	70	245	Ø15	280
ATLAS SBM 38	1158	881	1161	160	220	342	DN65	DN65	1045	---	758	---	78	280	Ø15	310
ATLAS SBM 45	1202	942	1222	160	220	342	DN65	DN65	1105	---	758	---	78	280	Ø15	310
ATLAS SBM 53	1490	1127	1492	180	265	405	DN80	DN80	1300	540	1080	100	92	285	Ø15	320
ATLAS SBM 63	1712	1355	1735	200	287	432	DN100	DN100	1538	656	1312	100	110	310	Ø19	350
ATLAS SBM 76	2070	1617	2101	225	311	508	DN125	DN125	1886	835	1670	100	130	320	Ø19	350
ATLAS SBM 22	690	466	698	120	178	253	DN40	DN40	597	---	490	---	50	220	Ø15	250
ATLAS SBM 32	900	660	919	155	215	316	DN50	DN50	790	---	600	---	70	245	Ø15	280
ATLAS SBM 42	1202	942	1222	160	220	342	DN65	DN65	1105	---	758	---	78	280	Ø15	310
ATLAS SBM 52	1490	1127	1492	180	265	405	DN80	DN80	1300	540	1080	100	92	285	Ø15	320
ATLAS SBM 62	1712	1355	1735	200	287	432	DN100	DN100	1538	656	1312	100	110	310	Ø19	350

ATLAS HBM progressive cavity pumps are used to transfer products of low and high viscosity as well as products containing soft particles.

These food-grade progressive cavity pumps are also recommended for use with edible oils, wine, concentrates and beverages in general. They can also be used to transfer viscous food products.



## Features

- ✓ Length Geometry
- ✓ Lower Sliding Velocity
- ✓ Higher Performance compared to classic geometry
- ✓ Minor service requirements
- ✓ Stability in pressure & flow due to longer sealing lines
- ✓ Improved flow characteristics
- ✓ Reduced Vibration, Turbulence, shear rates & pulsation
- ✓ Smooth and performance
- ✓ Improved volumetric, Mechanical & overall efficiency
- ✓ Block construction minimizes overall dimensions, providing a shorter pump length.  
Eliminates the need for coupling and cover protection.

## Technical data

Maximum Capacity	75 m <sup>3</sup> /h
Maximum Pressure	12 Bar
Maximum Temperature	100 °C
Maximum Viscosity	500.000 cPs

### Construction Materials

- ▶ Pump Body: Stainless steel 316
- ▶ Available Rotors: Stainless steel 316
- ▶ Available Stators: NBR, EPDM, VITON, HYPALON
- ▶ Seal: Mechanical seal SIC/SIC/
- ▶ Ports: Flange PN16

The Atlas Progressive cavity pumps are widely used:



**In the oenological field**  
Stemmed grapes, wine, must, e.t.

#### In food processing

Honey, yogurt, beer, fruit pulp and juice, glyucose, brine, syrops, melted butter, liquid sugar, eggs in liquid form, tomato pulp e.t.c



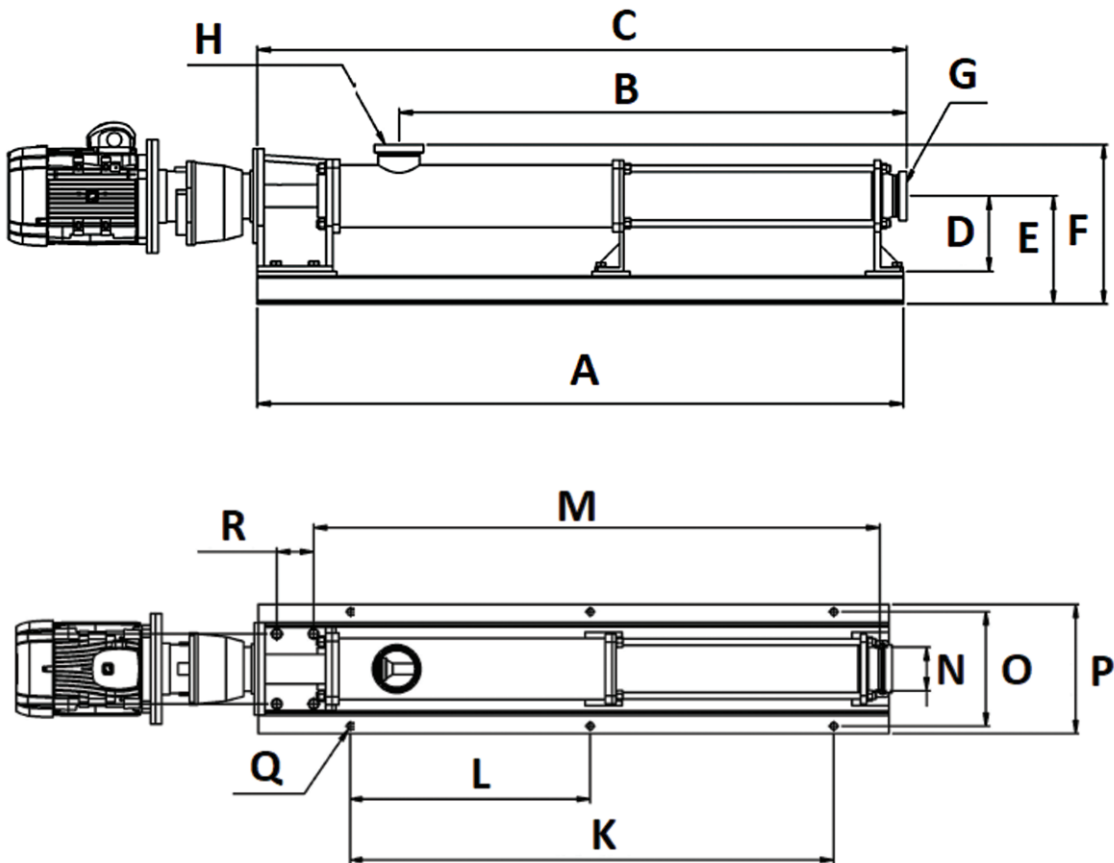
**In cosmetics industry and in the production of pharmaceutical products**  
Cleaning lotion, cream, shampoo, liquid soap, e.t.c

### Pump Models

Type	Max capacity	Max Pressure	Ports
ATLAS HBM 15	2 m3/h	4.5 Bar	DN 32 DIN 11851
ATLAS HBM 21	5 m3/h	6 Bar	DN 40 DIN 11851
ATLAS HBM 31	13 m3/h	6 Bar	DN 50 DIN 11851
ATLAS HBM 38	25 m3/h	6 Bar	DN 65 DIN 11851
ATLAS HBM 45	30 m3/h	6 Bar	DN 80 DIN 11851
ATLAS HBM 53	40 m3/h	6 Bar	DN 100 DIN 11851
ATLAS HBM 63	50 m3/h	6 Bar	DN 100 DIN 11851
ATLAS HBM 22	1 m3/h	12 Bar	DN 40 DIN 11851
ATLAS HBM 32	3 m3/h	12 Bar	DN 50 DIN 11851
ATLAS HBM 42	6 m3/h	12 Bar	DN 65 DIN 11851
ATLAS HBM 52	11 m3/h	12 Bar	DN 100 DIN 11851
ATLAS HBM 62	20 m3/h	12 Bar	DN 100 DIN 11851



### Pump Dimensions



Pump Type	BASIC DIMENSIONS mm															
	A	B	C	D	E	F	G	H	K	L	M	N	O	P	Q	R
ATLAS HBM 15	644	402	634	128	176	244	DN 32 DIN 11851	DN 32 DIN 11851	490	---	544	50	220	250	φ15	--
ATLAS HBM 21	690	446	678	120	178	247	DN 40 DIN 11851	DN 40 DIN 11851	490	---	590	50	220	250	φ15	--
ATLAS HBM 31	900	647	910	160	220	317	DN 50 DIN 11851	DN 50 DIN 11851	600	---	790	70	245	280	φ15	--
ATLAS HBM 38	1157	872	1152	160	220	333	DN 65 DIN 11851	DN 65 DIN 11851	758	---	1032	78	280	310	φ15	--
ATLAS HBM 45	1202	933	1213	160	220	333	DN 80 DIN 11851	DN 80 DIN 11851	758	---	1096	78	280	310	φ15	--
ATLAS HBM 53	1490	1118	1483	179	264	397	DN100 DIN 11851	DN100 DIN 11851	1080	540	1300	92	285	320	φ15	100
ATLAS HBM 63	1712	1340	1720	200	287	423	DN100 DIN 11851	DN100 DIN 11851	1312	656	1537	118	310	350	φ19	100
ATLAS HBM 22	690	446	678	120	178	247	DN 40 DIN 11851	DN 40 DIN 11851	490	---	590	50	220	250	φ15	--
ATLAS HBM 32	900	647	910	160	220	317	DN 50 DIN 11851	DN 50 DIN 11851	600	---	790	70	245	280	φ15	--
ATLAS HBM 42	1157	872	1152	160	220	333	DN 65 DIN 11851	DN 65 DIN 11851	758	---	1032	78	280	310	φ15	--
ATLAS HBM 52	1490	1118	1483	179	264	397	DN100 DIN 11851	DN100 DIN 11851	1080	540	1300	92	285	320	φ15	100
ATLAS HBM 62	1712	1340	1720	200	287	423	DN100 DIN 11851	DN100 DIN 11851	1312	656	1537	118	310	350	φ19	100

**ALPHADYNAMIC PUMPS** presents it's new range of progressive cavity pumps ATLAS W Completely renewed mechanics to increase the performance, with a new design and a universal construction, ATLAS W pumps can handle any task, from low viscous to high viscous liquids .



### Features

- ✓ Length Geometry
- ✓ Length Pitch
- ✓ Lower Sliding Velocity
- ✓ Higher Performance compared to classic geometry
- ✓ Minor service requirements
- ✓ Stability in pressure & flow due to longer sealing lines
- ✓ Improved flow characteristics
- ✓ Reduced Vibration, Turbulence, shear rates & pulsation
- ✓ Smooth and performance
- ✓ Improved volumetric, Mechanical & overall efficiency
- ✓ Block construction minimizes overall dimensions, providing a shorter pump length. Eliminates the need for coupling and cover protection.
- ✓ Can be installed vertically or horizontally to suit the application. Can run in either direction.

### Technical data

Max. Pressure	12 BAR
Max. Capacity	75 m3/h
Max. Viscosity	Up to 500.000 cPs
Max. operating temperature	100°C

### Construction Materials

#### Basic pump characteristics

- ▶ Liquids with solid suspensions without damage
- ▶ Liquids that require gentle handling

#### Construction Materials:

- ▶ Body Pump: Stainless steel 316 / 304
- ▶ Ports: DN 11851 X Hopper
- ▶ The rotating parts are in Stainless steel 316L / Stainless steel 304L
- ▶ Seal: Mechanical Seal Sic/Sic/FKM or EPDM, Cer/Graph/FKM or EPDM
- ▶ Stator: NBR, EPDM, HYPALON, FKM

#### Most common industrial applications are:

- ▶ Food and Beverage industry like honey, sugar, pastes, oil, yogurt, juices, wine, must, chocolate, butter, pulp etc
- ▶ Cosmetics industry like shampoo, cream, liquid soap etc
- ▶ Varnish and paint industry like ink, paints, glue
- ▶ Many other industrial sectors like mining, agriculture, shipping building and textile
- ▶ Petrochemistry

#### They are used for the transfer of:

- ▶ Low viscous and high viscous liquids, even paste-like

PUMP SIZE	ATLAS W - BASIC DIMENSIONS -mm-																					
	A	B	C	D	E	G	H	J	K	P	M	N	L	S1	V	W	X	Y	P1	P2	R1	PORTS
ATLAS W15-1	120	150	562		36	50	75	120	195	400	45	124	632	12XØ8	140	190	120	170	56,5	50	10	DN32
ATLAS W21-1	120	150	614		36	50	75	120	195	452	45	124	684	12XØ8	140	190	120	170	56,5	50	10	DN40
ATLAS W31-1	140	180	850		51	70	110	155	255	664	50	138	923	16XØ10	200	270	180	250	60	55	15	DN50
ATLAS W38-1	150	200	1032	485	44	78	118	160	300	877	60	154	1157	16XØ10	240	310	210	280	70	62,5	15	DN65
ATLAS W45-1	150	210	1087	540	44	78	118	160	300	932	60	154	1212	16XØ10	240	310	210	280	70	70	15	DN80
ATLAS W53-1	170	210	1343	657	44	92	142	200	340	1122	70	178	1477	18XØ12	330	400	240	310	74	70	15	DN100
ATLAS W63-1	180	220	1582	757	47	110	152	225	385	1351	75	190	1731	20XØ15	495	575	275	355	90	90	17,5	DN100
ATLAS W32	140	180	850		51	70	110	155	255	664	50	138	923	16XØ10	200	270	180	250	60	55	15	DN50
ATLAS W42	150	200	1032	485	44	78	118	160	300	877	60	154	1157	16XØ10	240	310	210	280	70	62,5	15	DN65
ATLAS W52	170	210	1343	657	44	92	142	200	340	1122	70	178	1477	18XØ12	330	400	240	310	74	70	15	DN100
ATLAS W62	180	220	1582	757	47	110	152	225	385	1351	75	190	1731	20XØ15	495	575	275	355	90	90	17,5	DN100

